

WAAS CH <b>86522</b> <b>W21A</b>	APP CRS <b>209°</b>	Rwy Idg THRE <b>224</b> Apt Elev <b>246</b>
--	------------------------	---

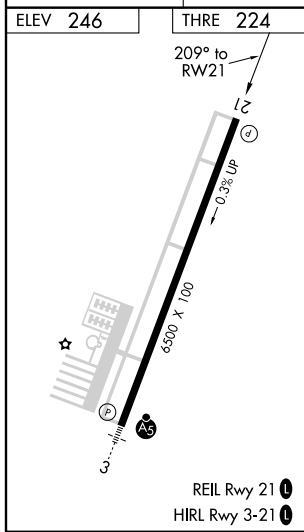
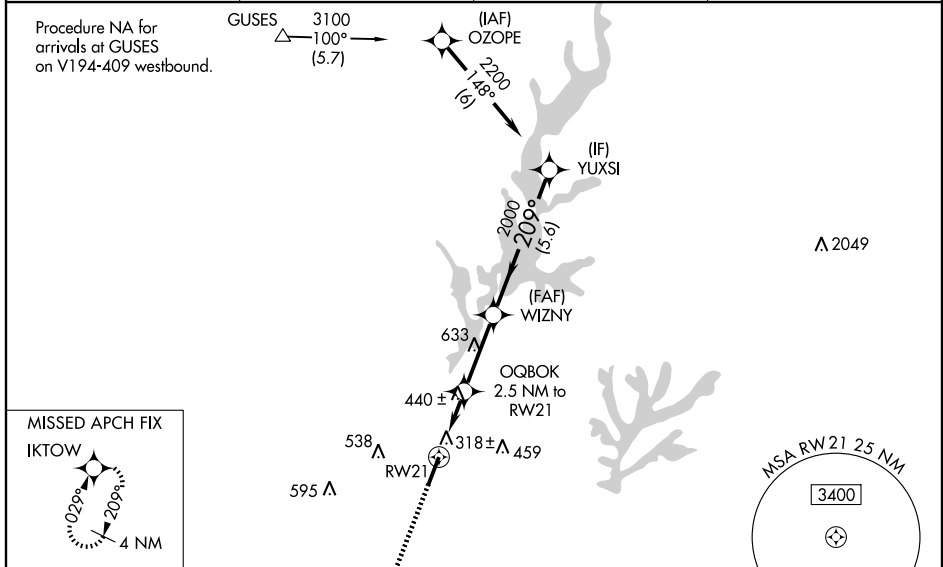
SANFORD/  
RALEIGH EXEC JETPORT AT SANFORD-LEE COUNTY (T/A)

# RNAV (GPS) RWY 21

**⚠** Baro-VNAV NA when using Raleigh-Durham altimeter setting. For uncompensated Baro-VNAV systems, LNAV/VNAV NA below -15°C (5°F) or above 42°C (107°F). DME/DME RNP-0.3 NA. Visibility reduction by helicopters NA. VDP NA with Raleigh-Durham altimeter setting. When local altimeter setting not received, use Raleigh-Durham altimeter setting and increase all DA 81 feet and all MDA 100 feet, LPV all Cats visibility to 1¼ miles, LNAV/VNAV all Cats visibility to 1½ miles, LNAV Cats C and D visibility to 1½ miles, Circling Cat C visibility to 1½ miles and Cat D visibility to 2¼ miles.

MISSED APPROACH: Climb to 2100 direct IKTOW and hold.

AWOS-3 <b>120.625</b>	RALEIGH APP CON <b>125.3 353.675</b>	UNICOM <b>123.075(CTAF) 0</b>	GCO <b>135.075</b>
--------------------------	---	----------------------------------	-----------------------



ELEV 246	THRE 224				
2100 IKTOW	OQBOK 2.5 NM to RW21	WIZNY 2000	YUXSI 2200		
*LNAV only.	*1.4 NM to RW21	*1060	2000	GS 3.00° TCH 45	
1.4 NM	1.1	2.9 NM	5.6 NM		
CATEGORY	A	B	C	D	
LPV DA		524-1	300 (300-1)		
LNAV/VNAV DA		479-7/8	255 (300-7/8)		
LNAV MDA	700-1	476 (500-1)	700-1 1/8	476 (500-1 1/8)	
CIRCLING	760-1 514 (600-1)	780-1 534 (600-1)	800-1 1/2 554 (600-1 1/2)	840-2 594 (600-2)	

# RNAV (GPS) RWY 21

SE-2, 20 SEP 2012 to 18 OCT 2012

SE-2, 20 SEP 2012 to 18 OCT 2012