



AEROFLIGHT

Electronic attitude indicator with flight director

Adjust your attitude. KI 256 & KG 258 replacement.

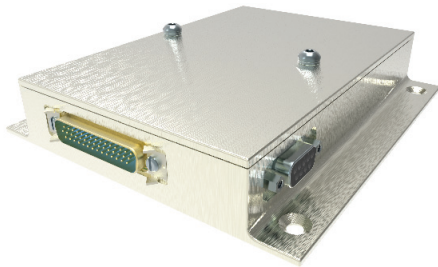


Actual size

AeroFlight electronic attitude indicator with flight director.



AeroFlight KI 300 Attitude Indicator



KA 310 Autopilot Adapter

KI 256 & KG 258 Replacement

The AeroFlight attitude indicator is a solid state indicator, replacing the KG 258. And, when combined with the KA 310 autopilot adapter, becomes a state-of-the-art replacement for your current 3 inch KI 256/255 flight director indicator. It provides the same operation and interface, with an advanced LCD display and MEMS attitude reference sensors. The internal battery exceeds the FAA one-hour backup operation requirement, eliminating the need for an alternate vacuum gyro.

- Certified as a sole-source 3-axis attitude reference for the autopilot
- Adds a TSO'd airspeed, altitude, and slip and IVSI (instantaneous vertical speed) indicators
- Replaces KI 255, KI 256, and KG 258 attitude indicators
- Yaw rate replicates KRG 330 and 331 yaw rate sensors
- Input: 11V to 32V DC (direct current)
- In-panel autopilot alignment and air data calibration simplifies installation and maintenance
- Supports KAP 100/150/200, KFC 150/200/225/250/275 flight control systems
- Initial support is for Class 1 and 2 airframes using FAA policy memo PSACE-23-08 for installation of the AeroFlight KI 300 attitude indicator, in either the original attitude indicator location, or as a replacement for the turn/bank indicator; the KA 310 autopilot adapter is installed under an AML STC
- The AeroFlight KI 300 may also be used (stand-alone) as a primary replacement for the mechanical gyro, or as a backup attitude indicator, depending on the primary indicators' requirements

The AeroFlight is simple to use, reliable, and brings great value to your current aircraft without breaking the bank.

KA 310 Autopilot Adapter Specifications	
TSO Compliance	TSO C198
Software	DO-178 Level C
Altitude	-1500 to +35,000 ft
Dimensions	W 5.25in x H 0.95in x L 5.8in (133mm x 24mm x 147mm)
Weight	1.1 lbs (500g)
Voltage	11-32V

AeroFlight KI 300 Specifications	
TSO Compliance	FAA TSO C2d (Type B), C3e, C4c, C8E (Type B), C10b (Type I), C113a, C198, C201 (A5 HX T7)
Software	DO-178 Level C
Temperature	-20° to +55° C
Altitude	-1500 to +35,000 Ft
Airspeed	30-400 Kts
Dimensions	3.52" x 3.25" x 1.7" (89mm x 81mm x 43mm)
Weight	.70 lbs (317.5g)
Voltage	11-32V
Power	35 Watts
Backup Battery	Internal battery provides nominal 2 hour backup

Find Out More

To learn more, call 1.855.250.7027, contact your local BendixKing dealer or visit www.bendixking.com

BendixKing

9201-B San Mateo Blvd. NE
Albuquerque, NM 87113
www.bendixking.com

A60-1524-000-003 | 07/18
© 2018 BendixKing

BendixKing[®]