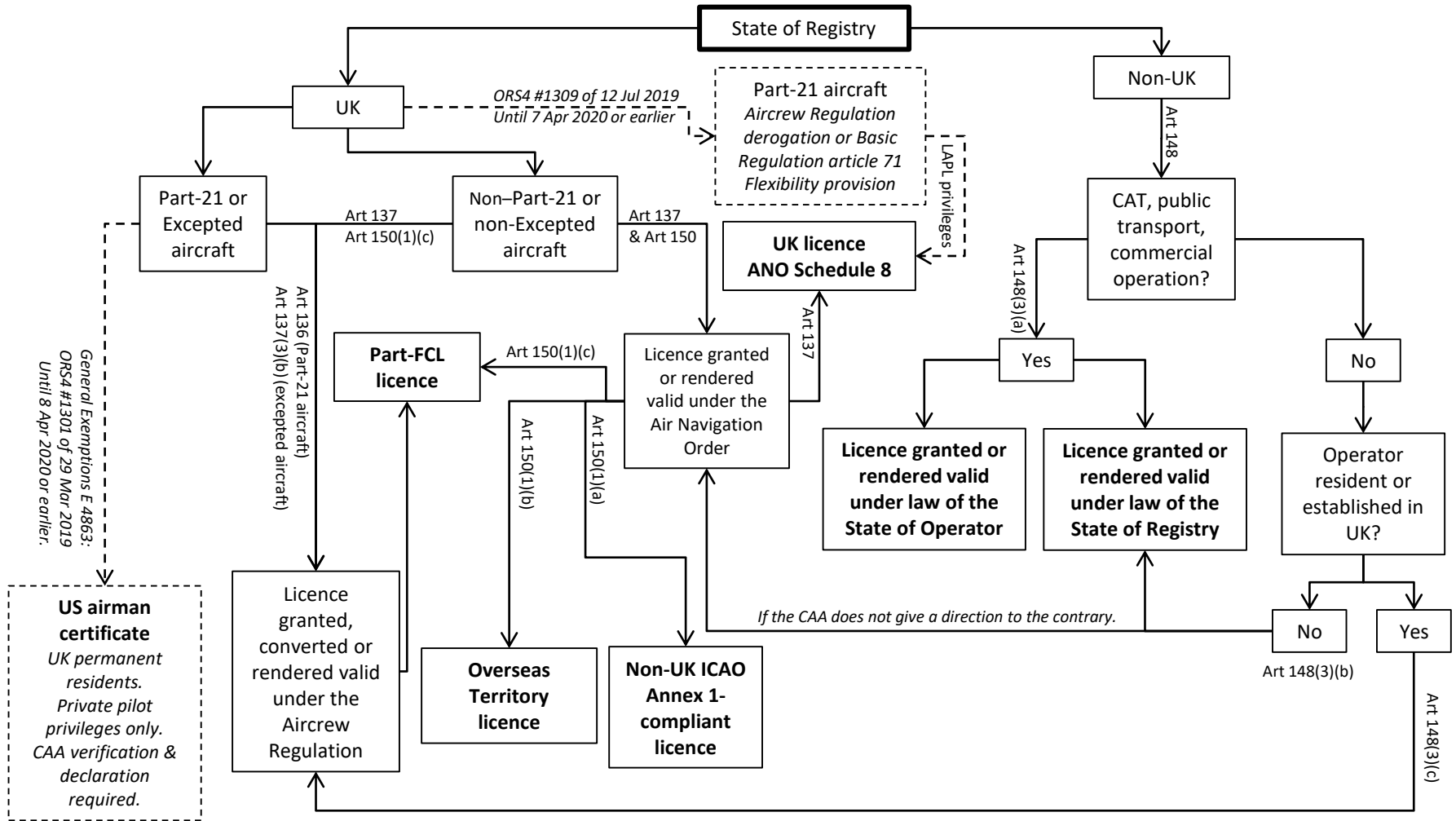


UK Air Navigation Order 2016 – Part 6

After Exit Day



“Excepted aircraft” means a non-Part-21 aircraft that is referred to in paragraphs (a)(ii), (d) or (h) of Annex II of the Basic Regulation that is flying for the purpose of commercial air transport (CAT). [The UK ANO 2016 as amended has not updated the reference to refer to the renamed Annex to the retained version of Regulation (EU) No 2018/1139.]

“Part-” is a reference to an annex in retained EU law.