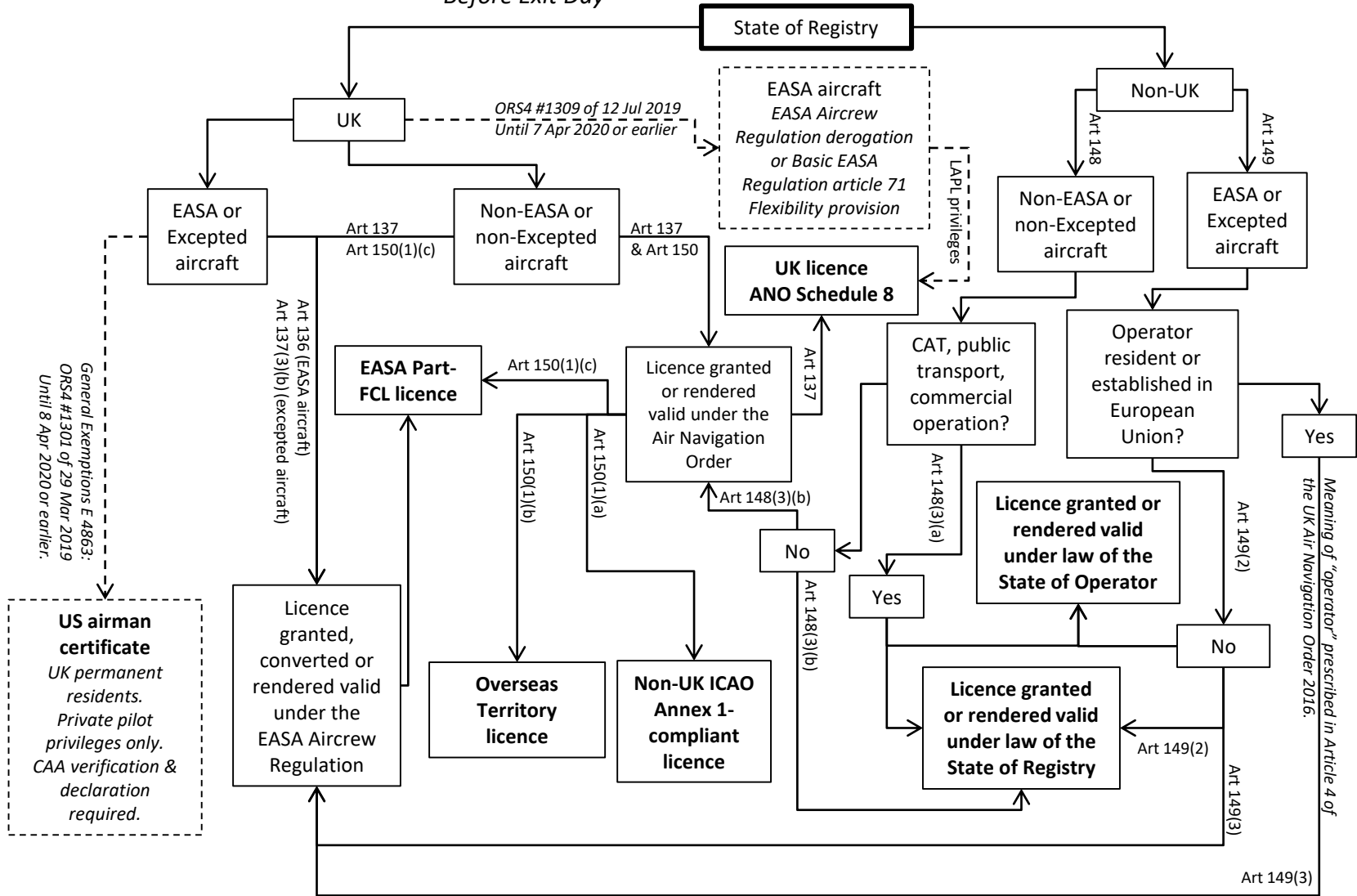


UK Air Navigation Order 2016 – Part 6

Before Exit Day



“Excepted aircraft” means a non-EASA aircraft that is referred to in paragraphs (a)(ii), (d) or (h) of Annex II of the Basic EASA Regulation that is flying for the purpose of commercial air transport (CAT). [The UK ANO 2016 as amended has not updated the reference to refer to the renamed Annex to Regulation (EU) No 2018/1139.]