

ICAO - INSTRUMENT APPROACH CHART

WARNING 1: Some users on ILS APCH reported false LOC captures. Pilot's attention is drawn to pay max caution. See AIP ENR 1.3

APP Venezia APP/Radar 118.900 (118.250) AD ELEV 7

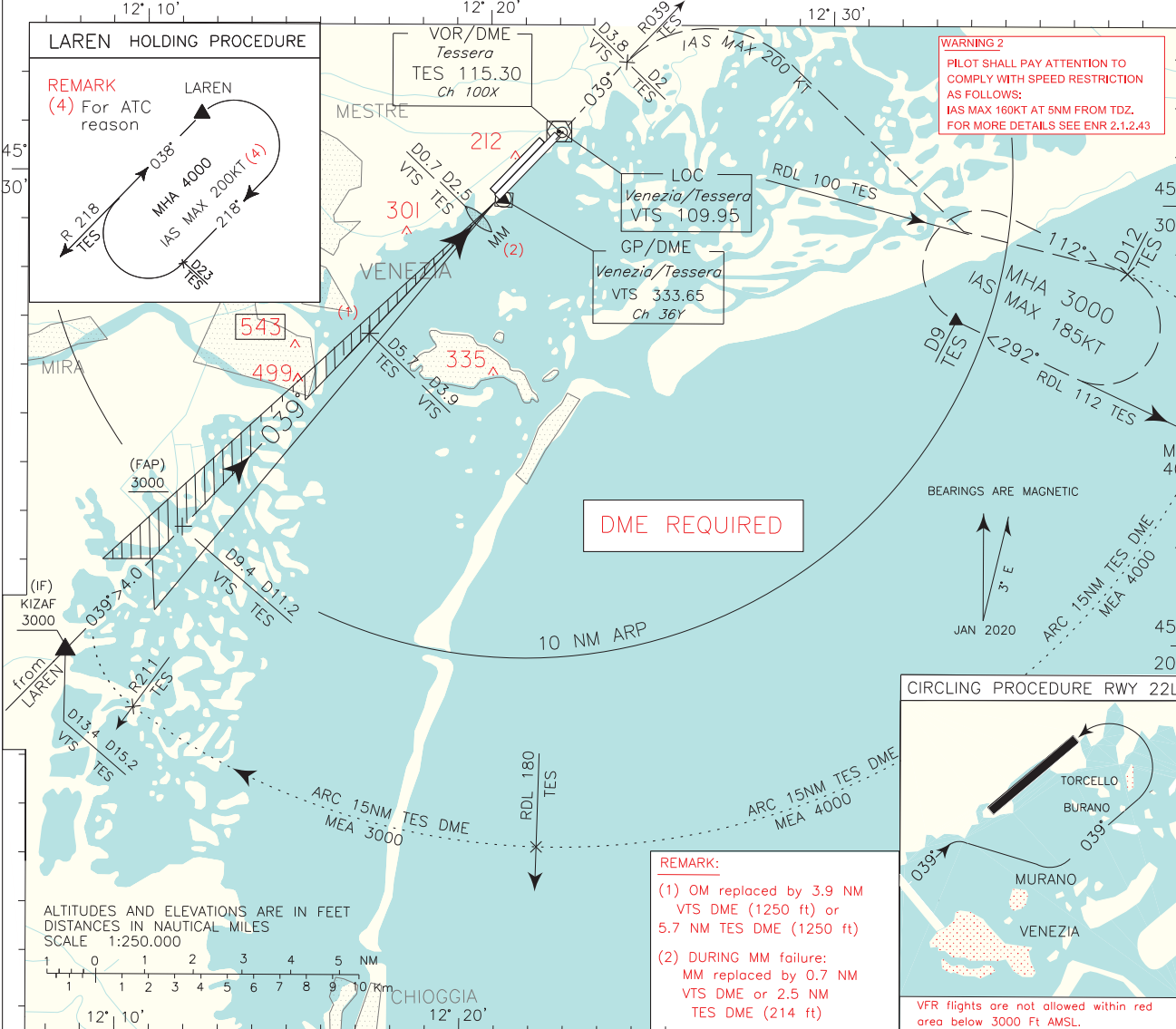
TWR Venezia TWR 120.200 (118.250)

ATIS Venice Arrival and Departure Information 128.650

VENEZIA/TESSERA ILS or LOC-Y RWY 04R

DOC 8168 ED 6 - 2014. AMDT 7

CHANGE: WARNING 2 ADDED - MAG VAR UPDATED



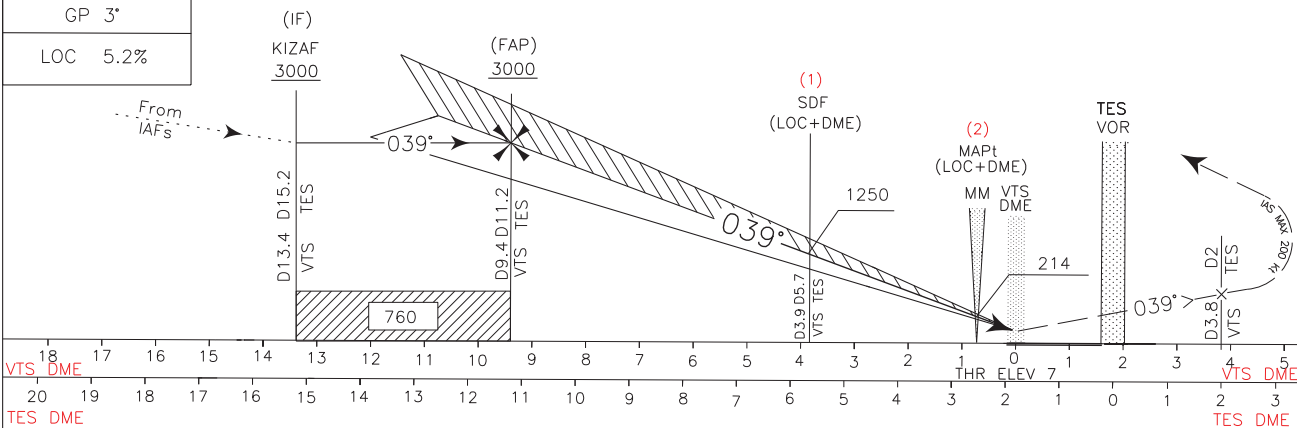
TRANSITION ALT 6000

RDH 15.55 M

GP 3°

LOC 5.2%

MISSED APPROACH: Proceed on TR 039° until 2 NM TES DME (3.8 NM VTS DME) climbing to 3000 ft, then turn right, with IAS MAX 200 kt, to intercept and follow RDL 100 TES VOR until point RDL 100/12 NM TES VOR to join missed approach holding pattern. Hold between 9 NM and 12 NM TES DME, inbound TR 292°(RDL 112 TES VOR), right turns, IAS MAX 185 kt.



STRAIGHT IN APPROACH	OCA(OCH)				REMARK: (3) Circling procedure allowed south of RWY and only for RWY 22L as shown in the inset on the plan view.	FT PER MIN	GS	D3.9VTS-MM	MM-THR	TES DME	ALT (HGT)	MNM SECT ALT TES	VORDME
	A	B	C	D									
ILS CAT I	184 (177)	196 (189)	204 (197)	215 (208)		530	100	1:57	0:18	7 NM	1657(1650)		
ILS CAT II	67 (60)	77 (70)	92 (85)	107 (100)		640	120	1:37	0:15	6 NM	1339(1332)		
LOC+DME	450 (443)					745	140	1:23	0:13	5 NM	1020(1013)		
CIRCLING (3)	580 (573)	600 (593)	730 (723)	950 (943)		850	160	1:13	0:11	4 NM	702 (695)		
						955	180	1:05	0:10	3 NM	383 (376)		

**THIS PAGE
INTENTIONALLY
LEFT BLANK**